



ATIS 128.0
ARR 120.5 363.8
TWR 118.3 381.2
GND 121.7 275.6

ALL ALTITUDES WILL BE ISSUED BY ATC

If RNAV STAR includes a DTW, the following procedures apply.

If approach clearance is NOT RECEIVED prior to DTW

- Fly depicted heading $\dots \rightarrow$
- Expect radar vectors to final

If approach clearance RECEIVED prior to DTW

- Fly **RNAV STAR** via **DTW**, then
- Via **FACF**, then
- Fly the **STRAIGHT-IN** approach

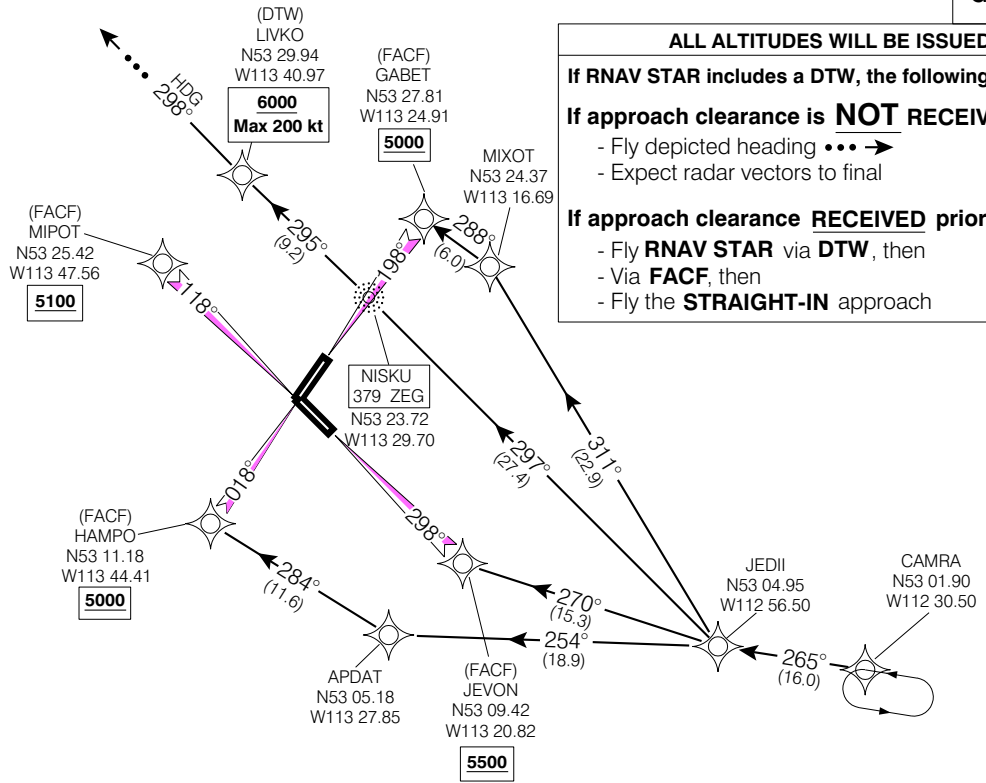


Chart not to scale

© 2005 Her Majesty The Queen in Right of Canada, Department of Natural Resources
Source of Canadian Civil Aeronautical Data: © 2005 NAV CANADA