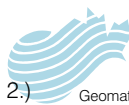


SID (VECTOR)

EDMONTON INTL TWO DEP (CYEG 2.)

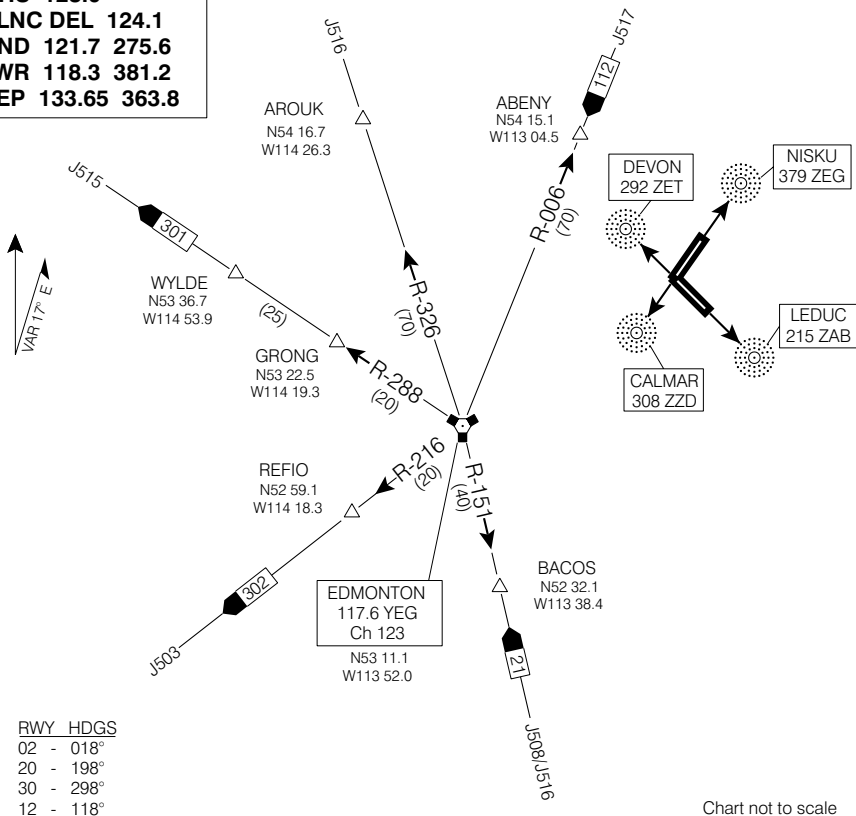


Geomatics Canada

EDMONTON INTL

EDMONTON ALBERTA

VOT 114.8
 ATIS 128.0
 CLNC DEL 124.1
 GND 121.7 275.6
 TWR 118.3 381.2
 DEP 133.65 363.8

CLIMB TO AND
MAINTAIN 7000' ASL

DEPARTURE ROUTE DESCRIPTION

- Rwys 02, 20, & 30:** 1. Climb rwy hdg for vectors to assigned route or depicted fix.
 2. Maintain 7000' ASL or flight planned altitude, whichever is lower.
- Rwy 12:** Climb on track 118° via "LEDUC" NDB for vectors. Maintain 7000' ASL or flight planned altitude, whichever is lower. TURBO-JET/TURBO-FAN aircraft **no right turns before passing** the "LEDUC" NDB.

NOTE: Refer to Noise Abatement Procedures for additional requirements.

COMMUNICATION FAILURE

On recognition of failure 10 minutes or less after take-off and in IFR weather conditions, proceed as follows:

1. Transponder 7600;
2. Upon reaching last assigned altitude proceed directly on course;
3. Maintain last assigned altitude for 10 minutes after take-off; then,
4. Climb to flight planned altitude.

NOTE: If communication failure occurs more than 10 minutes after take-off, comply with the appropriate procedure for communication failure enroute.

EDMONTON INTL TWO DEP (CYEG 2.)

EDMONTON ALBERTA

EDMONTON INTL

EFF 15 APR 04

CHANGE: Revised

NAD83