

STAR

CAMRA SIX ARR (CAMRA, CAMRA 6)



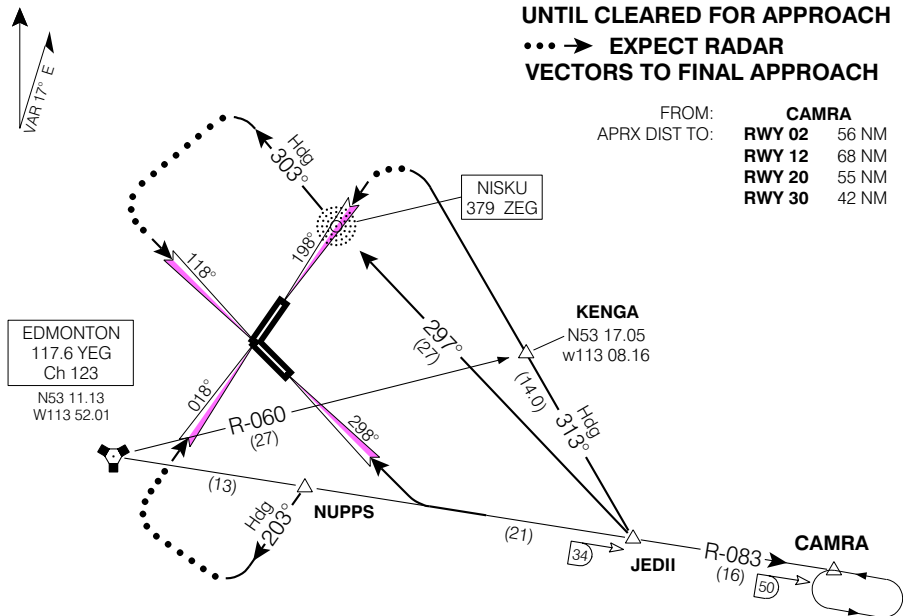
EDMONTON INTL
EDMONTON ALBERTA

ATIS 128.0
ARR 120.5 363.8
TWR 118.3 381.2
GND 121.7 275.6

CAMRA	YEG R-083 / 50.0 DME	N53 01.90 / W112 30.50
JEDII	YEG R-083 / 34.0 DME	N53 04.95 / W112 56.50
NUPPS	YEG R-083 / 13.0 DME	N53 08.82 / W113 30.75

MAINTAIN ASSIGNED ALTITUDE UNTIL CLEARED FOR APPROACH
••• → EXPECT RADAR VECTORS TO FINAL APPROACH

FROM:	CAMRA	
APRX DIST TO:	RWY 02	56 NM
	RWY 12	68 NM
	RWY 20	55 NM
	RWY 30	42 NM



RWY 02:

... From **CAMRA INTXN** via **YEG R-083 INBOUND** to **NUPPS INTXN** then via **Hdg 203°**. Expect **RADAR VECTORS** to final approach course. Do **NOT** expect lower than **8000'** until **NUPPS INTXN**.

RWY 12:

... From **CAMRA INTXN** via **YEG R-083 INBOUND** to **JEDII INTXN**, turn **RIGHT** direct **"ZEG" NDB** then via **Hdg 303°**. Expect **RADAR VECTORS** to final approach course. Do **NOT** expect lower than **8000'** until by **"ZEG" NDB**.

RWY 20:

... From **CAMRA INTXN** via **YEG R-083 INBOUND** to **JEDII INTXN** then via **Hdg 313°**. Expect **RADAR VECTORS** to final approach course. Do **NOT** expect lower than **8000'** until by **KENGA**.

RWY 30:

... From **CAMRA INTXN** via **YEG R-083 INBOUND** to intercept Runway 30 Localizer.

CAMRA SIX ARR (CAMRA, CAMRA 6)

EFF 30 SEP 04 CHANGE: Directional arrow added

EDMONTON ALBERTA
EDMONTON INTL

NAD83